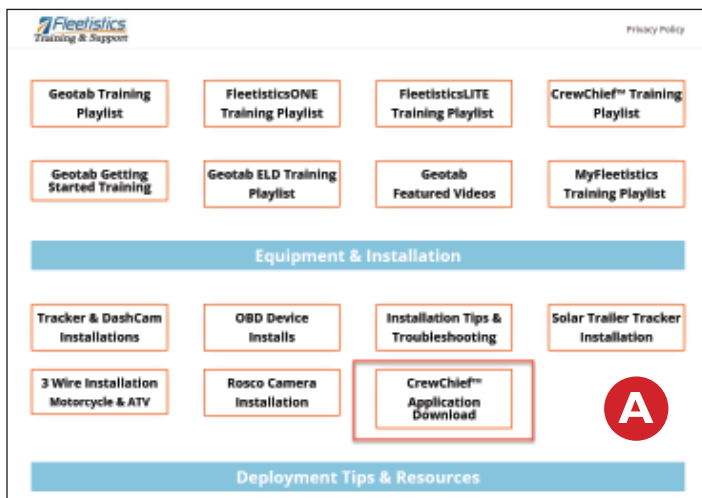


Install the Desktop Application

CrewChief™ offers a desktop application for accessing your vehicles cams. Video files tend to be large. Downloading through a web browser can be challenging. The CrewChief™ desktop application simplifies the process. The installation file can be downloaded from the Fleetistics training page at:

<https://training.myfleetistics.com>

Scroll down to the *Equipment & Installation* area of the page (Figure A). Click the CrewChief™ Application Download option. Unzip the download file and double-click the resulting installation file.



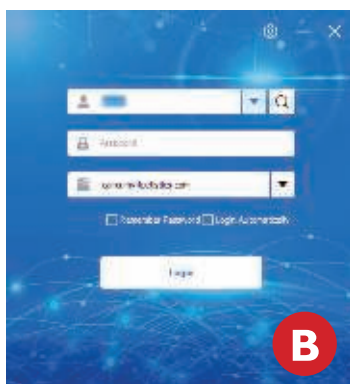
Logging in

Once installation is complete, launch the application by pressing the Windows key and typing CMSv6. After the application is the login window is displayed (figure B). Enter the following, then click *Login*.

Your Login:

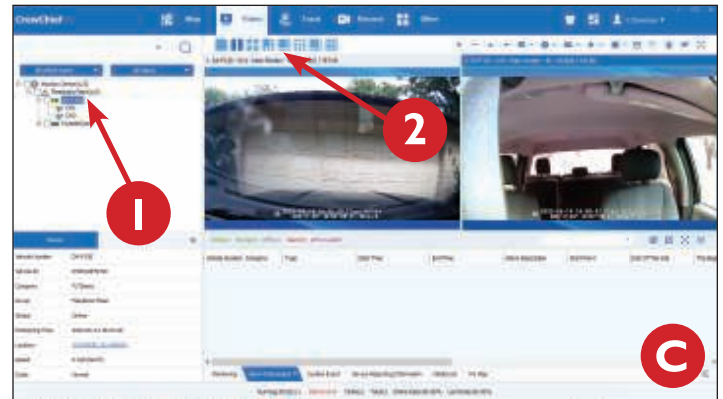
Your Password:

Server: cams.myfleetistics.com



View Real-Time Video

From the *Monitoring Center* (figure C1) pane, expand the vehicle tree by clicking the plus (+) sign to the left of the company name to display vehicles. To view video from both cameras, double-click the vehicle name. To view a single camera, expand the vehicle options by clicking the plus (+) sign to the left of the vehicle name. Double-click CH1 to view the forward facing camera. Double-click the CH2 to view the interior facing camera.



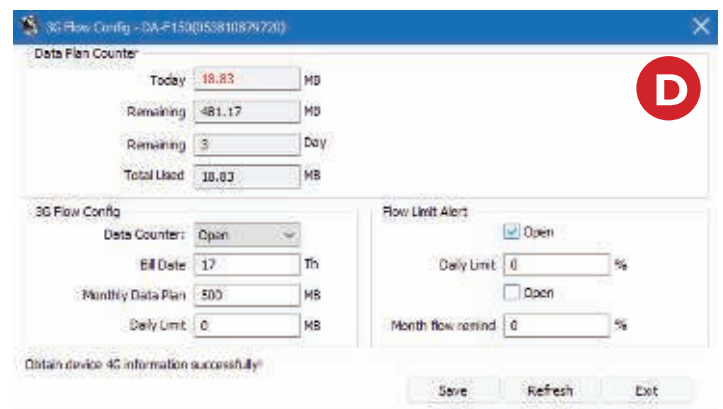
To view multiple vehicles

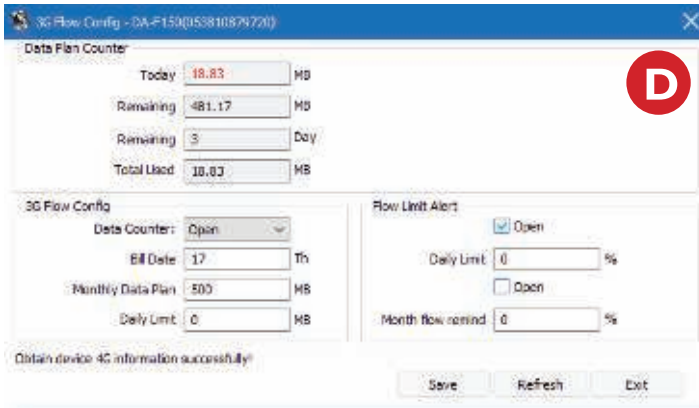
To view multiple vehicles concurrently, click the icons illustrated in figure C2.

Monitoring and limiting data usage

The *3G Flow Config* window allows for monitoring the data used by a cam. It displays the current days usage, month to date usage, and the amount of data left on the data plan for the month. The following are the steps to enable and configure data usage monitoring and set daily or monthly limits for a cam. This configuration should be performed for each cam in your account.

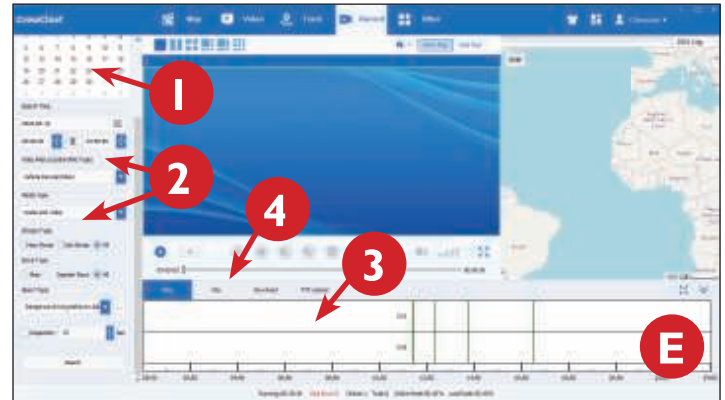
1. Right-click the cam in the *Monitoring Center* and select *3G Flow Config* and the window illustrated in figure D is displayed.





TIP: Viewing real-time video transfers large amounts of data. Make sure to turn off live streaming when not in use.

2. Enable the monitor by enabling the Yes option for the *Open Monitor* option.
3. Enter the monthly data included in your plan in the *Monthly Limit* field. Most plans are 500 MB.
4. If you would like a daily pop-up reminder, enable the *Open Daily Remind* option. To enable a monthly reminder, enable the *Open Monthly Remind* option.
5. Enter 17 in the *Settlement Date* field. This is the date of the month the new data plan begins.
6. To set a daily data limit, enter the MB limit per day in the *Day Limit* field.
7. Once all options are specified, click the *Save* button. To close the window, click the *Close* button.



To download a file from the cam

To a list of files on a cam, click the *File* tab (figure E4) and a file of videos from the cam is displayed. To play the video, double-click the desired video (Figure F1). To download, right-click the video and select *Download MP4* from the video. In the window that is displayed, specify the start and end time for the video (Figure F2), then click OK. By default the start and end time for the full video file is specified. To download the full file, click *OK* without editing the times.

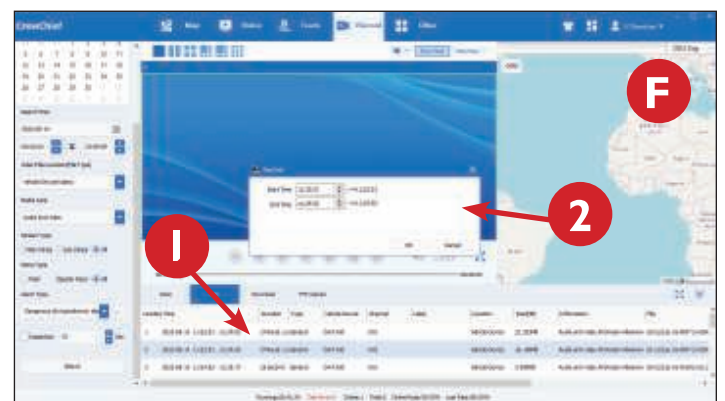
To rename a vehicle

Click the *Other* icon located near the top of the main window then click *Manage*. Click the pencil icon located to the left of the cam to rename and a new window is displayed containing the available fields.

Enter the desired name in the *Plate NO.* field. Finally, scroll down to the bottom of the window and click the *Save* button. In order to see the new name, refresh your browser by holding down the *Control* key and pressing the *F5* key.

To view videos on the cam

Click the *Record* icon located near the top of the window and the window illustrated in figure E is displayed. Select the vehicle to view from the menu indicated in figure E1. Specify the date and time by making entries in the fields indicated in figure E2. Once all selections are made, click the *Search* button. Once the search button is clicked, available videos can be viewed by double-clicking lines that represent the video on a timeline (figure E3), or by viewing a list of videos by clicking the *File* tab (figure E4)



Files are downloaded to your internal hard drive in `GPS-DOWNLOAD > DOWNLOAD_FILE > <cam name> DATE.`

The base cam plan includes 500MB of data transfer per month. Additional data plans are available. Contact your account manager for more information.

Monitor Panel Icons

An icon is displayed to the left of each vehicle in the *Monitor Panel*. The icon color communicates the current status of the vehicle and the cam.

116 This color indicates the cam is in vehicle ignition off cycle. The cam will continue to update location in this cycle. The icon remains this color for 3 to 5 minutes before the connection terminates and the icon turns gray. The cam remains of-line for 3 to 5 minutes, then reconnects to report location again. The first 30 to 45 seconds the icon becomes this color, live view can be previewed.

452 This color indicates a status transition. Often GPS location is not valid during this status. The cam has just started due to ignition state change or the cam is in the process of transitioning to ignition off state. Video preview is available inconsistently in this status.

115 This color indicates the vehicle's ignition is on and the vehicle is idling or moving at a slow speed. This color is common when a vehicle is used for delivery and is parking with ignition on for loading or unloading. Video preview is available in this status.

114 This color indicates the vehicle's ignition is on and the vehicle is traveling at highway speeds. It's common for a vehicle in operation to change between the green and blue colors based on the operating speed. Video preview is available in this status.

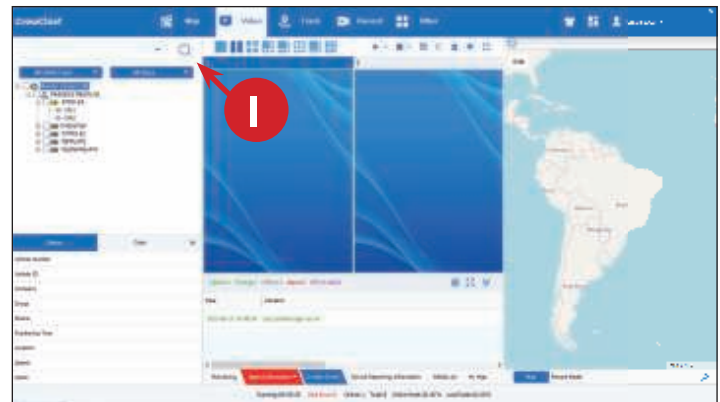
Live Preview

The *CrewChief* system provides for viewing live video based on the power/ignition status of the vehicle. See descriptions of the vehicle status icons above for an explanation of when to expect availability of live preview.

Streaming video is data intensive and can cause monthly allowances to be exceeded or capped depending on the plan chosen. *CrewChief* offers a tool that can be configured to monitor data usage and provided notices or stop data flow when a specified threshold is reached. See *Monitoring and limiting data usage* on page 2 of this guide for complete instructions to set limits.

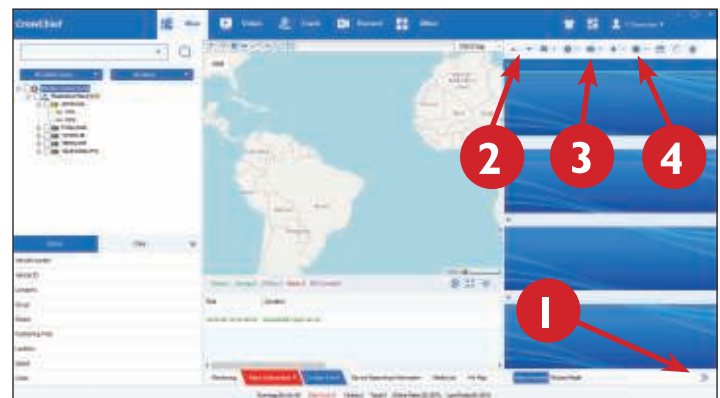
The base cam plan includes 500MB of data transfer per month. Additional data plans are available. Contact your account manager for more information.

View by status



The vehicle list can be viewed by the status of vehicles. These statuses include driving, online, offline, idling, ignition off, and GPS invalid. To choose a display status, make a selection from the menu highlighted above.

Navigating the video panel



- To show and hide the video panel, click arrows illustrated in figure 1.
- To scroll through videos, click the up/down arrows illustrated in figure 2.
- To save a still image from a video, click the icon illustrated in figure 3.
- To stop a preview video, click the icon illustrated in figure 4.

Change window panels

CrewChief offers multiple views for the main window. This includes view and map, map and video. To change the panel view, click the icon located in the upper right corner.

To change between views using keystrokes, press Ctrl + 1 for Map/Video. Ctrl+2 for Video/Map. Ctrl+3 for Track. Ctrl+4 for Record. And Ctrl+5 for Manage.