



Getting Started with FleetisticsONE

MyFleetistics provides online access to the data reported by your newly installed devices. Our new customer training group provides your new user name and password by email once the new account is activated. The portal is accessed from <https://www.fleetistics.com>. Once the page is displayed, click the *Login* link located in the upper right corner.

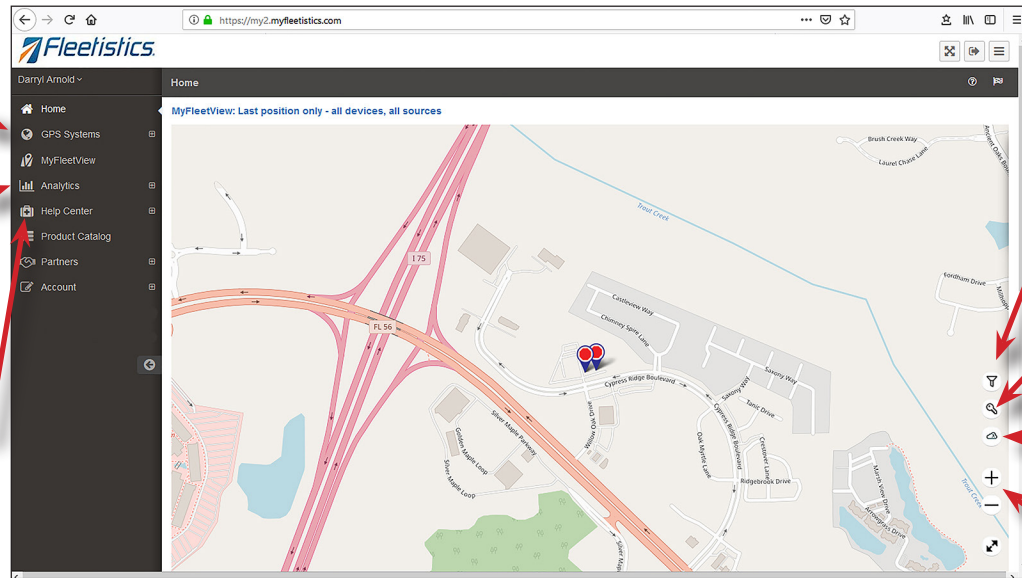
Go to <https://www.fleetistics.com>. Click *Login* located in the upper right corner of the window. Enter login and password. Once login is complete the window illustrated on the right is displayed.

The primary feature of the home page is *MyFleetView*. This is a map that contains the current location of all of the vehicles and assets included in your fleet no matter what system your devices report through.

Another feature available from the home page is the *Help Center* where training and support can be accessed. Here you can open a support ticket, access training videos, or sign up for our regularly scheduled webinars.

The Analytics option provides access to Fleetistics value-add reporting options

The Help Center provides access to training, support, and our knowledge base



Specify the vehicles or assets to display on your MyFleetView map by clicking this icon.

This icon displays the map key.

Toggle on/off display of the weather layer.

Zoom map display in or out.

The full system map is accessed by clicking *FleetisticsONE* in the left menu, then clicking the *Monitoring* option in the left menu.

Clicking the icon highlighted in figure A provides options for map display such as satellite view and selecting different map providers.

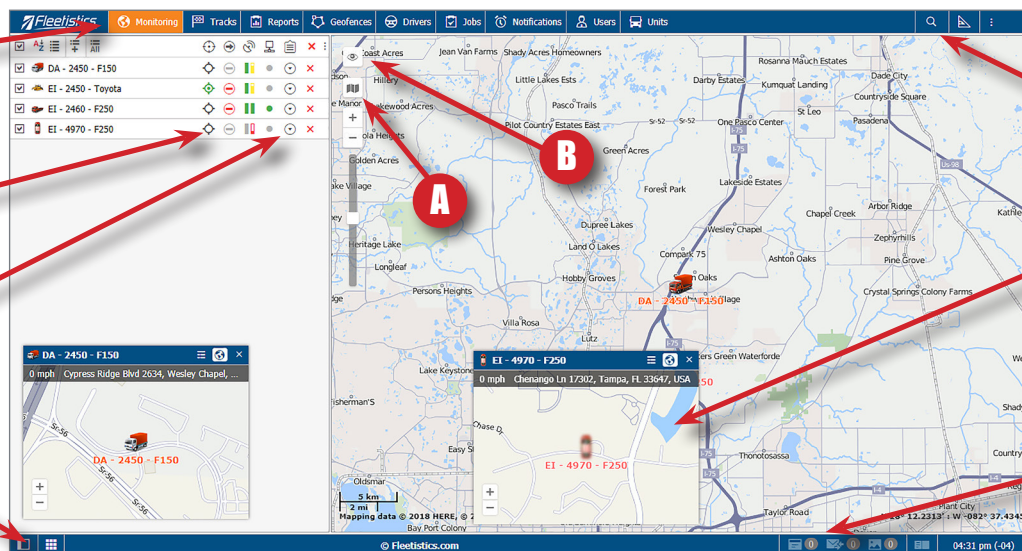
Positioning the mouse over the satellite icon displays the number of satellites used to determine vehicle location. The more satellites, the higher the accuracy of the location report.

Click the Monitoring option to access vehicle locations.

To view specific location of a vehicle, click this icon.

To access additional options for a vehicle click this icon.

Click this icon to toggle on/off the display of minimaps.



To locate a vehicle or location on the map click this icon.

To display minimap of vehicle double-click the name in the left panel.

Current notification count is displayed here.

FleetisticsONE - Getting Started

Customizing the Monitoring Panel

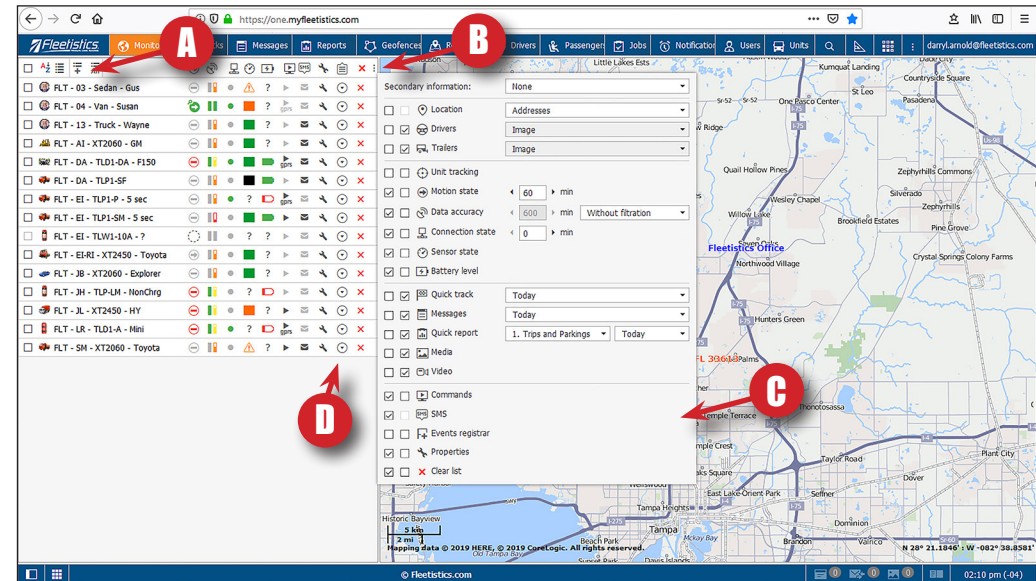
The *Monitoring* panel in *FleetisticsONE* provides for a high level of customization. This provides each user with the ability to display vehicles and information in a manner that best suits their specific needs.

Managing the vehicle list

By default, newly added vehicles are not displayed in the vehicle list. To add vehicle to the monitoring list, click the icon highlighted in figure A on the right. Once clicked, a window is displayed containing a list of vehicles. Double-click a vehicle in the list and it is added.

Customizing the Monitoring Panel

The information displayed in the monitoring panel can be customized by clicking the icon highlighted in figure B. Once clicked, the window illustrated in figure C is displayed. The options listed can be set to display as a column in the panel or in the menu accessed by clicking the icon highlighted in figure D. Enabling the left checkbox displays the information in a column to the right of a vehicle. Enabling the checkbox on the right adds the option to the menu displayed by clicking the icon highlighted in figure D.



Using the Monitoring Panel

The options displayed for each device change based on the information reported by each device model. The window illustrated in figure E includes the information reported by a solar powered asset tracker.

To expand the properties for a vehicle/device: Double-click the icon to the left of a vehicle/device name.

To display a vehicle/device on the map:

Enable the checkbox to the left of a vehicle/device name

To sort the vehicle/device list:

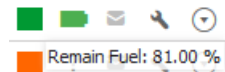
Click the  icon. To reserve the sort order, click the icon again.

To display the settings for a vehicle/device:

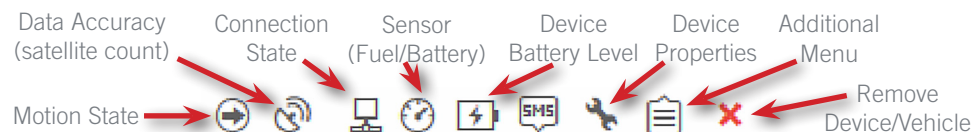
Click the wrench icon  located to the right of the vehicle/device name.

To view fuel level (requires vehicle support)

Position the mouse over the sensor icon.



Identifying default Monitoring Panel columns:

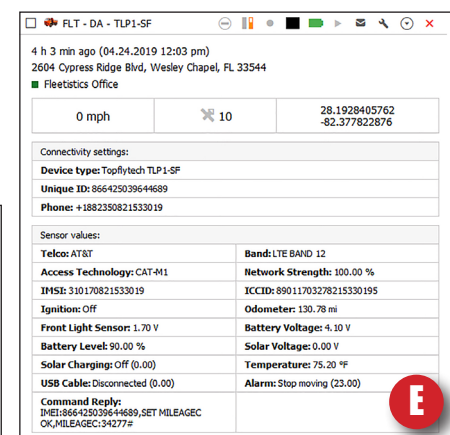
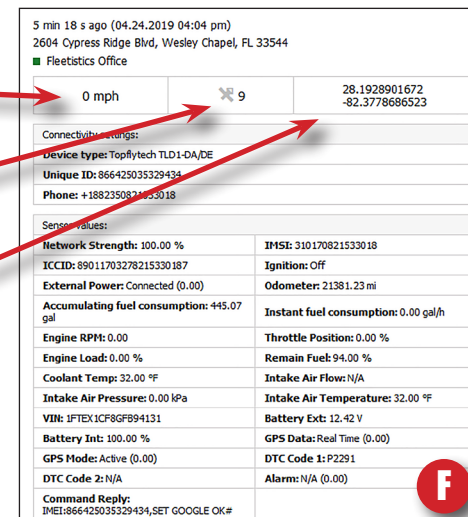


Information, or properties reported by each model of tracking device vary. Asset trackers report fewer properties than OBDII vehicle trackers. OBDII trackers can provide engine metrics such as fuel level when supported by a vehicle's diagnostic system.

Current speed

Satellite count

Current position



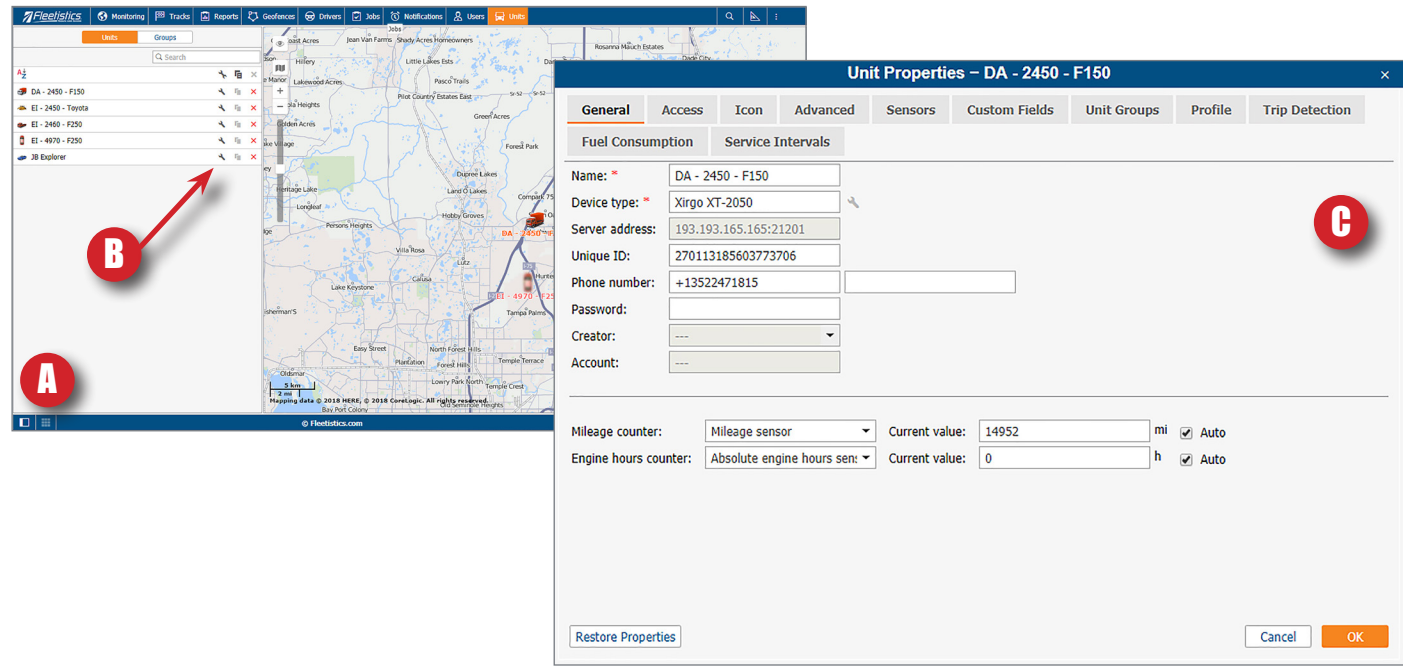
Properties reported and displayed for solar powered asset trackers (figure E)

Properties reported and displayed for OBDII vehicle trackers (figure F)

Renaming vehicles/devices

One of the first steps in configuring your new system is to rename vehicles/devices to a name appropriate for your organization. The name assists in visually identifying vehicles on the map. Use a name that is known throughout the organization such as a vehicle number, driver name, or vehicle name.

1. Click **Units** in the top menu and the window illustrated in figure A is displayed.
2. Click the wrench icon located to the right of the vehicle (figure B) to edit and the window illustrated in figure C is displayed.
3. Enter the desired name in **Name** field and click the **OK** button.
4. Refresh the browser to apply changes.

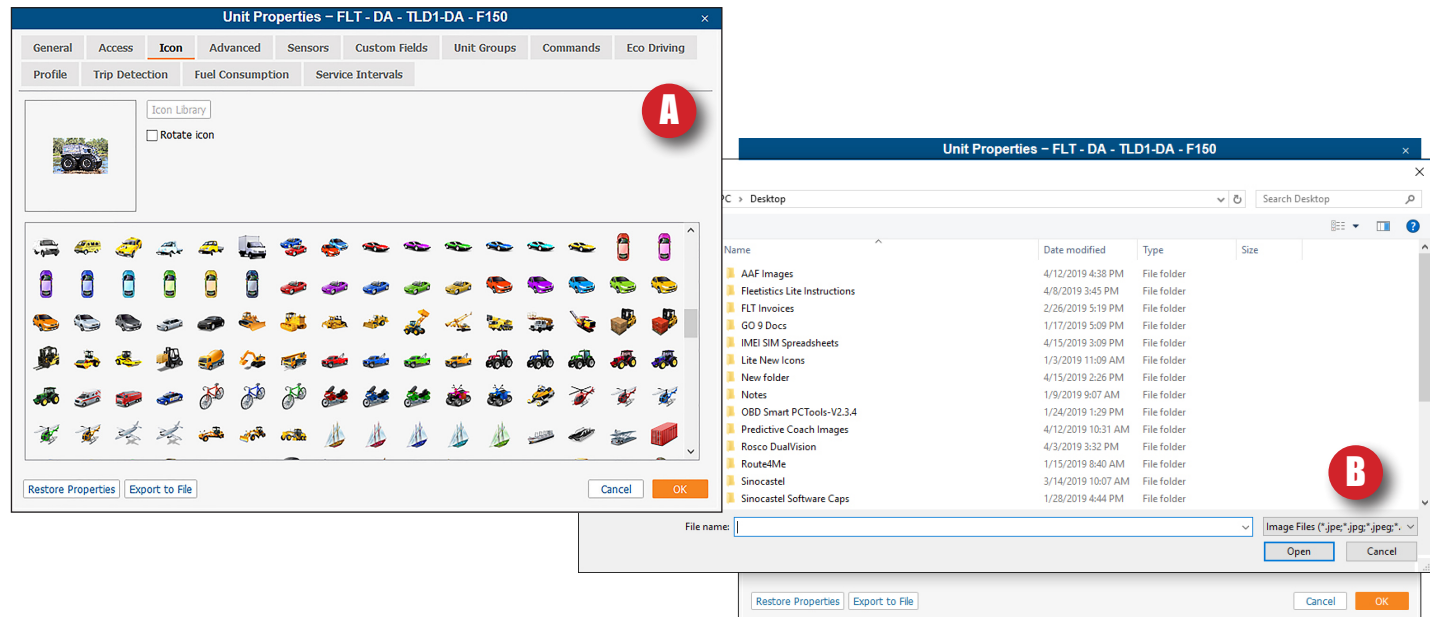


To change vehicle icon:

1. Complete steps 1 and 2 above to open the **Vehicle Properties** window.
2. Click the **Icon** tab located near the top of the window (figure A).
3. Click the **Icon Library** button.
4. Select icon by clicking the icon once, then clicking the **OK** button.

To add an icon:

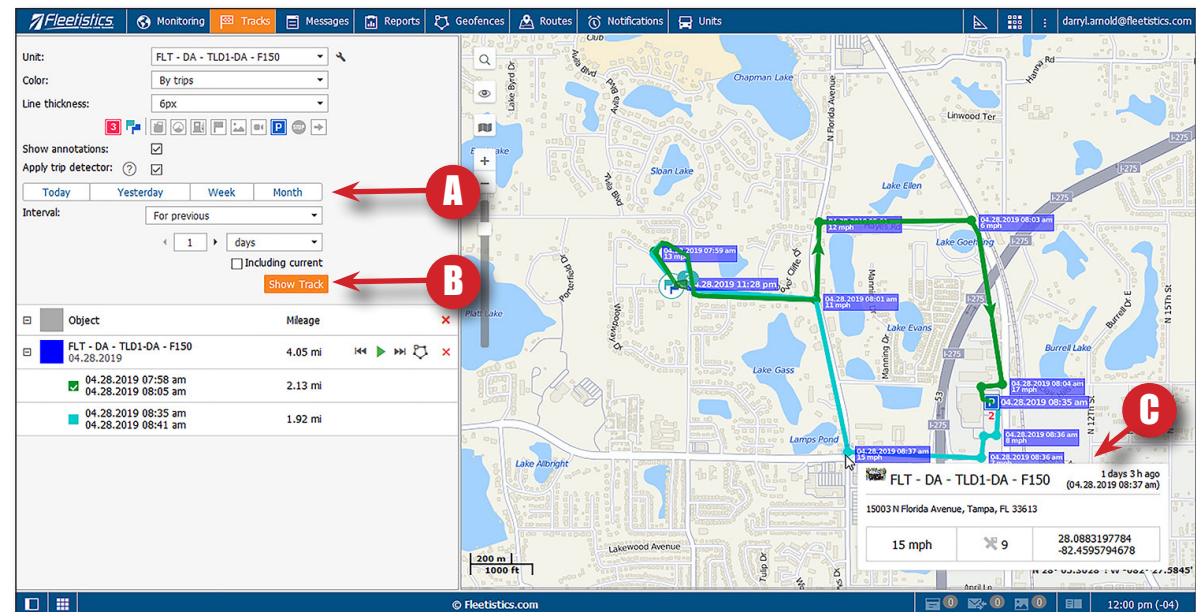
1. Complete steps 1 and 2 above to open the **Vehicle Properties** window.
2. Click the **Icon** tab located near the top of the window.
3. Double-click the current icon to display the standard select file window.
4. Locate the icon file, select, and click the **OK** button.



To view vehicle track:

1. Click **Tracks** option in the top menu and the window illustrated on the right is displayed.
2. Select the vehicle to display from the **Unit** menu.
3. Specify a date or date range to display by clicking the **Today**, **Yesterday**, **Week**, or **Month** buttons (figure A). Alternately, a date range can be specified by choosing dates in the **From** and **To** fields.
4. Once all selections are made, click the **Show Track** button (figure B).

TIP: For details on speed, location coordinates, and other parameters reported by your GPS device, position the mouse over a report point and a window is displayed (figure C).



Viewing trip segments:

Once tracks are displayed on the map, the segments for the trip and be viewed individually. A trip segment is the movement of a vehicle between ignition off events.

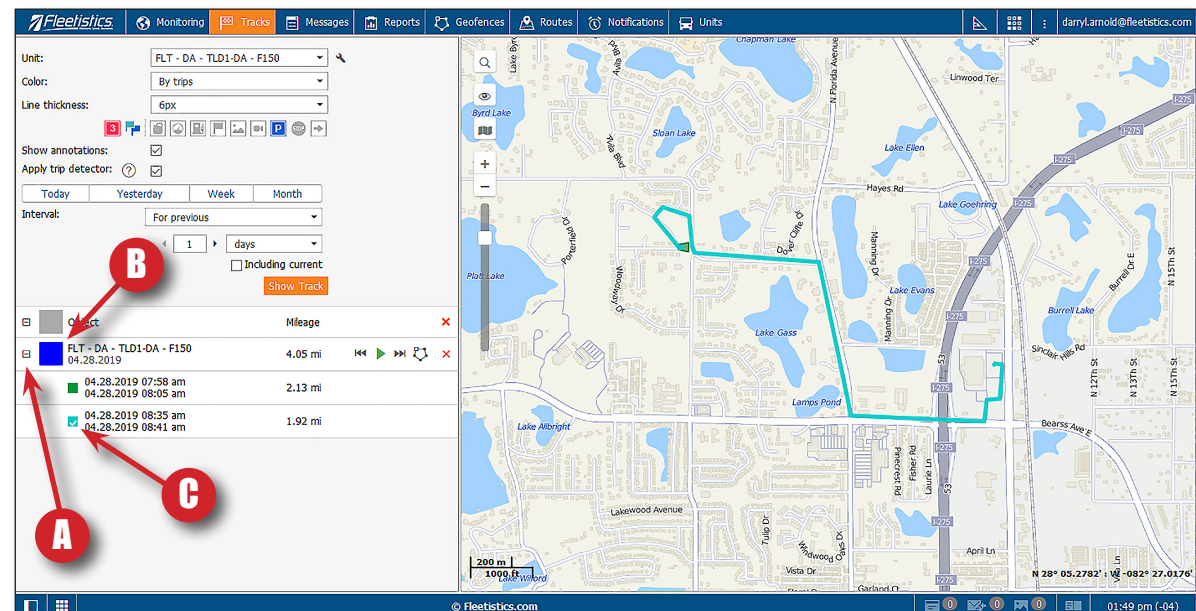
1. Expand trip segments view by clicking the plus (+) sign to the left of a displayed trip (see figure A).
2. Disable the full track view by clicking the checkmark located to the left of the track name (see figure B).
3. Enable the checkbox to the left of the trip segment to display by clicking the box once using the left mouse button (see figure C).

Remove trips or trip segments from the map:

Click the X located to the right of the trip/segment.

To view a motion reply of a trip:

Click the icon highlighted in figure E and the **Track Player** is displayed. The **Track Player** provides the ability to view the trip using **Google Street View**. A street view image is display of each report point of the trip.



Running a report

FleetisticsONE provides several standard reports. These reports are accessed by clicking the *Reports* tab located in the top menu. Once clicked the window illustrated on the right is displayed.

To run a report:

1. Click *Reports* in the top menu and the window illustrated on the right is displayed.
2. Select a report name from the *Templates* menu. In this example we will use the *Starts & Stops* report.
3. Choose the vehicle to include from the *Object* menu.
4. Specify the time interval to include by making a selection from the *Interval* menu.
5. Choose the dates to include by selecting dates in the *From* and *To* fields.
6. Once all selections are made, click the *Execute* button. The content of the report is then displayed below the map.

Date	No	Grouping	Beginning	Initial location	End	Final location	Duration
22-May-2018	1		07:55 am	902 Woodcliff Avenue, Tampa, FL 33613	08:18 am	2634 Cypress Ridge Blvd, Wesley Chapel, FL 33544	0:23:00
22-May-2018	1.1		07:55 am	902 Woodcliff Avenue, Tampa, FL 33613	08:18 am	2634 Cypress Ridge Blvd, Wesley Chapel, FL 33544	0:23:00
Total			07:55 am	902 Woodcliff Avenue, Tampa, FL 33613	08:18 am	2634 Cypress Ridge Blvd, Wesley Chapel, FL 33544	0:23:00

Geofences

Geofences define regions or locations within the system as a basis for reporting and notifications. For example, a *Geofence* created around a customer location, enables the system to provide notification when a vehicle arrives or departs from the location.

To create a Geofence:

1. Click *Geofences* in the top menu and the window illustrated on the right is displayed.
2. Click the *New* button.
3. Enter a name and description for the *Geofence* in the fields provided.
4. Choose a color to be used to display the *Geofence* on the map by clicking the desired color chip in the *Color* field.
5. Display the location for the *Geofence* on the map by entering the address in the search field (figure A).
6. Draw a perimeter around the location by double-clicking the left mouse button to create a point. Reposition the mouse and double-click to add points until the location is completely surrounded.

7. Click the *Save* button (figure B) to complete.

TIP: Creating *Geofences* around all customer and vendor locations can provide the basis for categorizing expenses. For example, time and

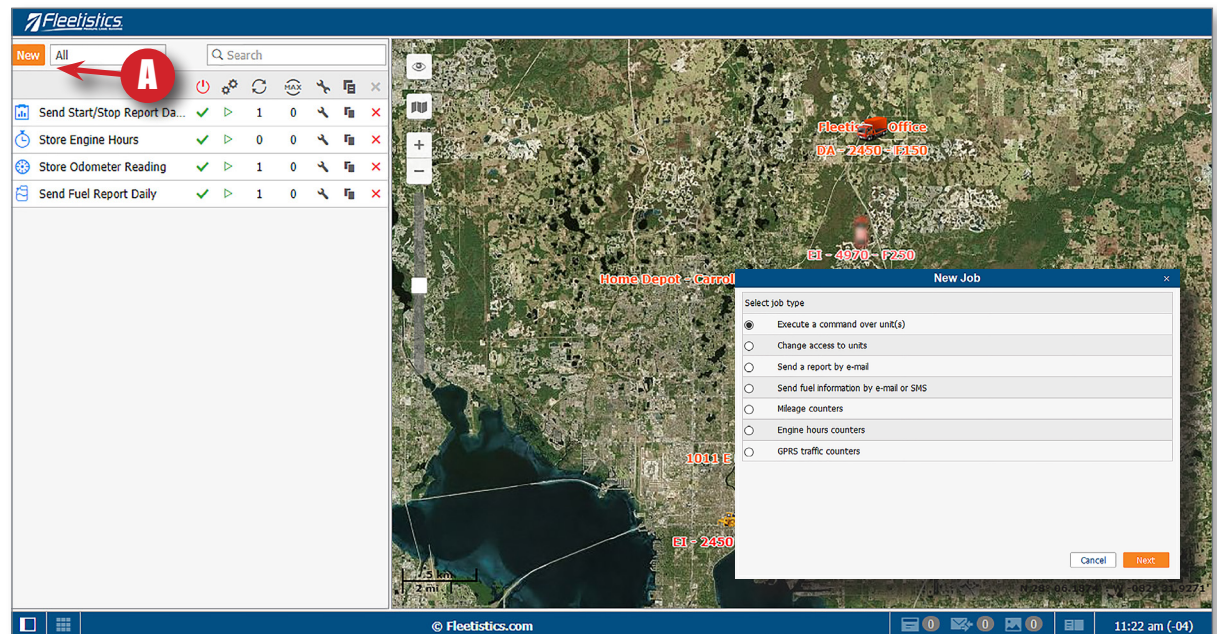
mileage expended for purchasing supplies can be separated from time and mileage to travel to customer locations.

Jobs

Jobs allow for scheduling or automating tasks within your system such as email a report, collect and store an odometer reading, or send fuel information.

To create a job:

1. Click *Jobs* in the top menu and the window illustrated on the right is displayed.
2. Click the *New* button (figure A) and a new window is displayed.
3. Select your account name by enabling the button to the left of the name, then click the *Next* button.
4. Select the purpose of the job and click the *Next* button.
5. Choose or enable the options displayed for the your job type. Options differ based on the selected report. Once options are selected, click the *Next* button.
6. Select the vehicles to include, then click the *Next* button.
7. Specify a time interval and start date for the job to run using the available options, then click the *OK* button.

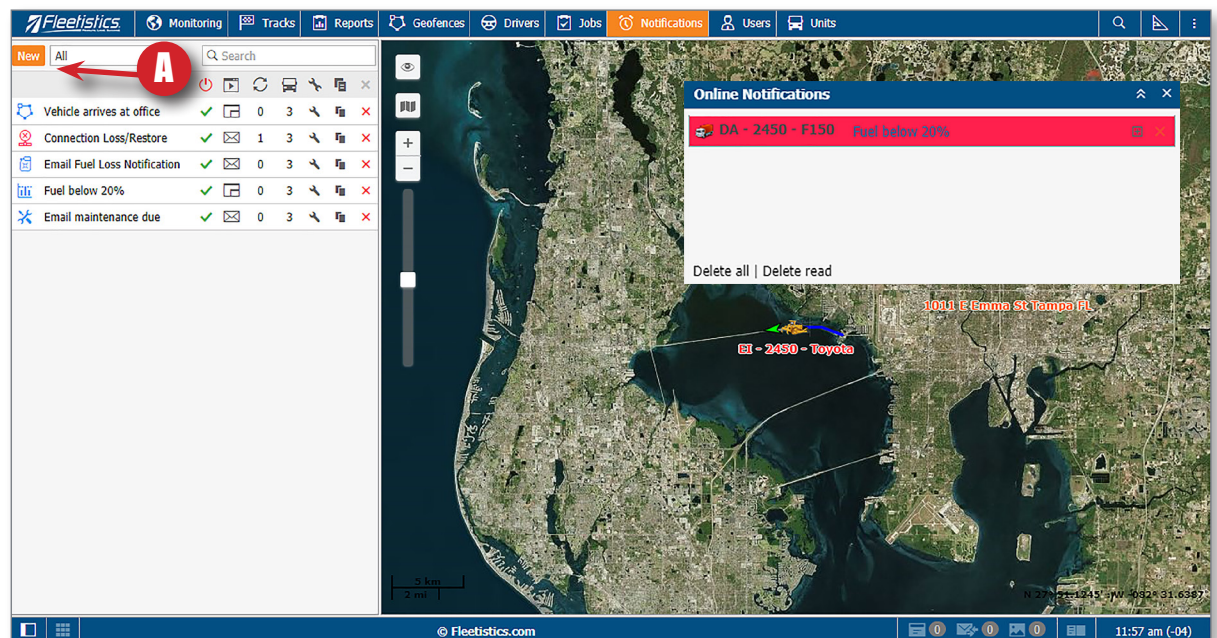


Notifications

Notifications provide email, mobile text, or on screen notification when a situation occurs. For example, a notification can be provided when a vehicle arrives in a geofence or when a vehicle exceeds a specified speed.

To create a job:

1. Click *Notifications* in the top menu.
2. Click the *New* button (figure A).
3. Select your account name by enabling the button to the left of the name, then click the *Next* button.
4. Select the vehicles to include, then click the *Next* button.
5. Choose the notification type then click the *Next* button.
6. Specify the options for the notification type selected, then click the *Next* button.
7. Specify the wording to be used in the *Notification* then click *Next*.
8. Specify the options for *Notification* duration and timeout, then click the *OK* button. to finalize.



FleetisticsONE - Getting Started

Mini-maps

Mini-maps provide a detailed map view of vehicles in a small separate window. This allows for displaying the main map at a desired size while monitoring the details of a specific vehicles in a window independent of the main system display.

To display a vehicle mini-map:

From the *Monitoring* tab, double-click a vehicle name.

To toggle on/off the display of all mini-maps

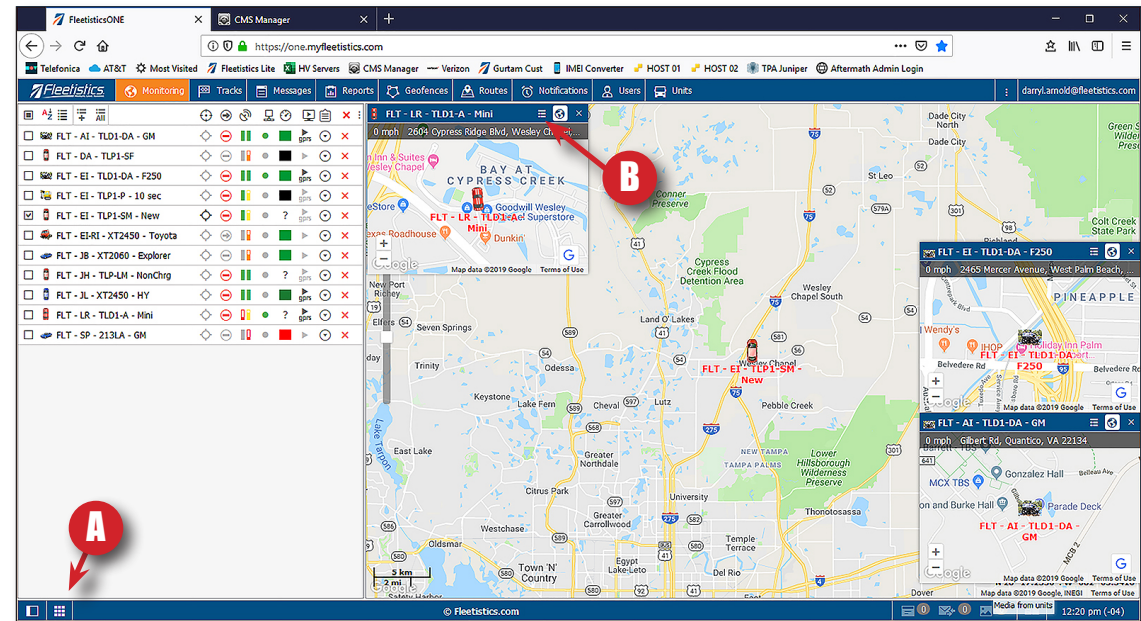
Click the show/hide mini-map icon located in the lower left corner of the main window. See figure A.

To toggle between mini-map and vehicle summary view

Click the *Vehicle Summary* icon located in the menu bar of the mini-map of the desired vehicle. See figure B.

To enlarge/reduce map size

Click the (+) and (-) icons located in the lower left corner of the mini-map window.



FleetisticsONE - Accessories

The FleetisticsONE platform is your scalable, one-source for all needs, fleet management solution. Ask your account manager about the expansion options available . . .

Driver ID

Our drive identification option is the wireless solution for effort-free tracking of drivers operating your vehicles. Our bluetooth key fob wirelessly communicates with your GPS device to report driver changes at shift-end. No need to track changes with manual paper tracking methods. Use Driver ID as an effortless time-clock system! The use cases are endless.



Wireless Tire Pressure Sensors

Extend the life of your tires without leaving the office. Wireless Bluetooth Tire Pressure Sensors continually transmit critical tire air pressure values to your GPS device to display and report within the GPS portal.

SOS Button

The optional *SOS Button* provides a vehicle-based source for drivers to request help through your GPS system. When the *SOS Button* is activated, your GPS system provides several options for notification. SMS text to a smartphone, pop-up notification through the GPS system, or email can be used individually or as a group to communicate a drivers need for assistance.

